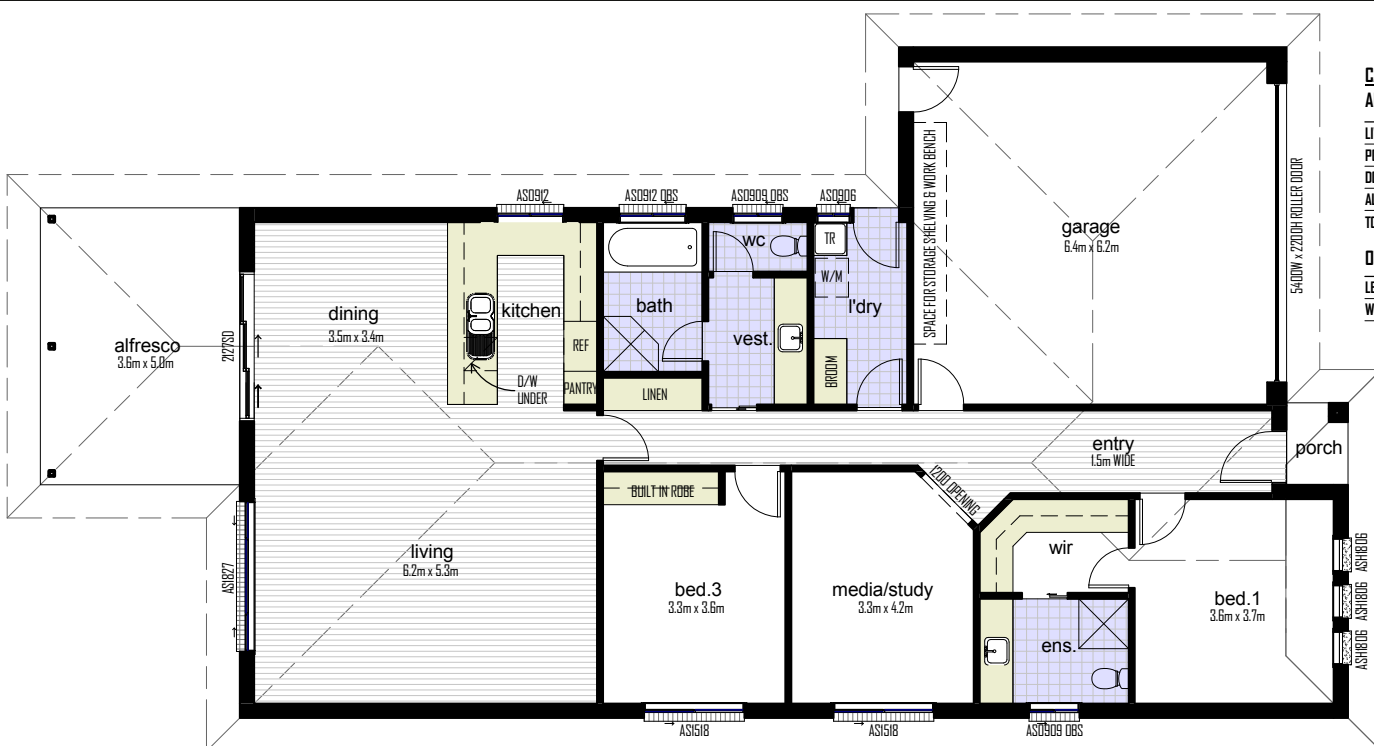




skillion roof facade shown



## CALLAWAY 219

AREAS	m <sup>2</sup>
LIVING	154.8
PORCH	1.6
DOUBLE GARAGE	44.2
ALFRESCO	18.0
TOTAL	218.6

## OVERALL DIMENSIONS

LENGTH	23.6m
WIDTH	12.1m

## Includes:

- concrete slab on ground
- brick veneer construction (bricks to be selected)
- 2.7m ceilings with cornice throughout
- Colorbond roof (colour to be selected)
- concrete paths, alfresco & driveway
- aluminium frame sliding doors and windows with screens & locks
- garage roller door with remote

- carpet to bedrooms & media/study
- ceramic tiles to wet areas
- woodgrain vinyl planks to remaining living areas
- kitchen with rolled laminate bench tops, laminate doors/drawers
- kitchen appliance package
- sliding doors to built in robe
- hanging rails & shelf to walk in robe

- ducted reverse cycle air-conditioner
- electric boost solar hot water service
- LED downlights to living areas
- ceiling fan w/ LED light to bedrooms
- Stratco Colorbond fencing & gates
- rainwater tank and pressure pump
- connection to community septic system
- 6 Star Energy Rating



**HandBuilt®**  
HOMES - RIVERLAND

*The smart choice in building*

Find us on

**facebook**

For further information contact  
our office on ☎ **08 8584 6797**  
or Gary Schultz 0418 839 649  
Jamie Knowling 0418 807 668

34 Gratwick Road, Loxton SA  
[www.handbuilt.com.au](http://www.handbuilt.com.au)